

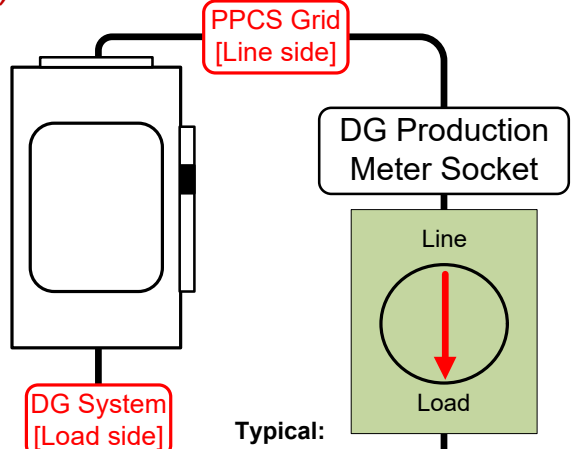
PPCS Net Metering

Technical Diagram:
Self-contained, dual meters
Revised: April 23, 2021

Must be located near main electric meter for easy access. (~10 feet)



Solar DG
"Visible break",
Lockable
Disconnect



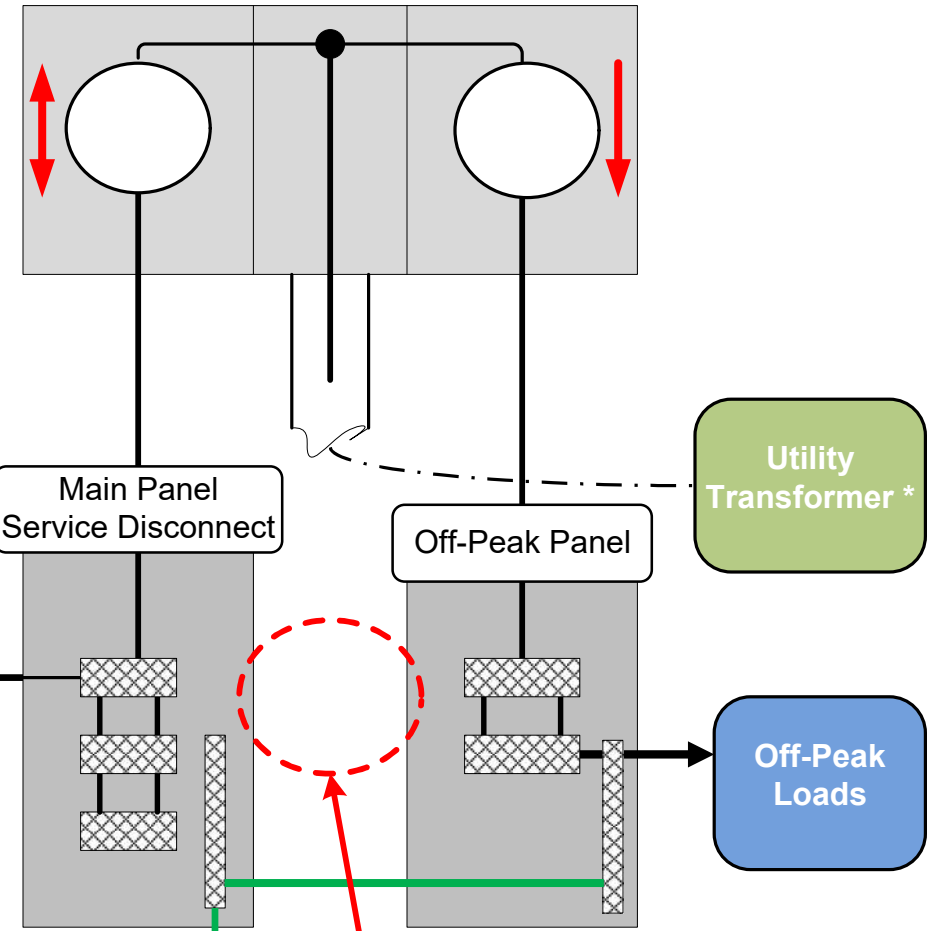
Typical:
125 Amp
Ring-Type
Meter Socket

DG Production Meter Socket Notes:
This socket will be wired with the A/C output from the DG system on the *line* side (top) and Pierce Pepin's "Grid" system wired on the *load* side (bottom)

Parallel Meter Socket

Main Meter
(Net metered)

Off-Peak Meter
(+ kWh Only, Detented)



Off-peak panel can not be served from the main panel.

***NOTE:** all wiring must comply with the National Electric Code and applicable State codes

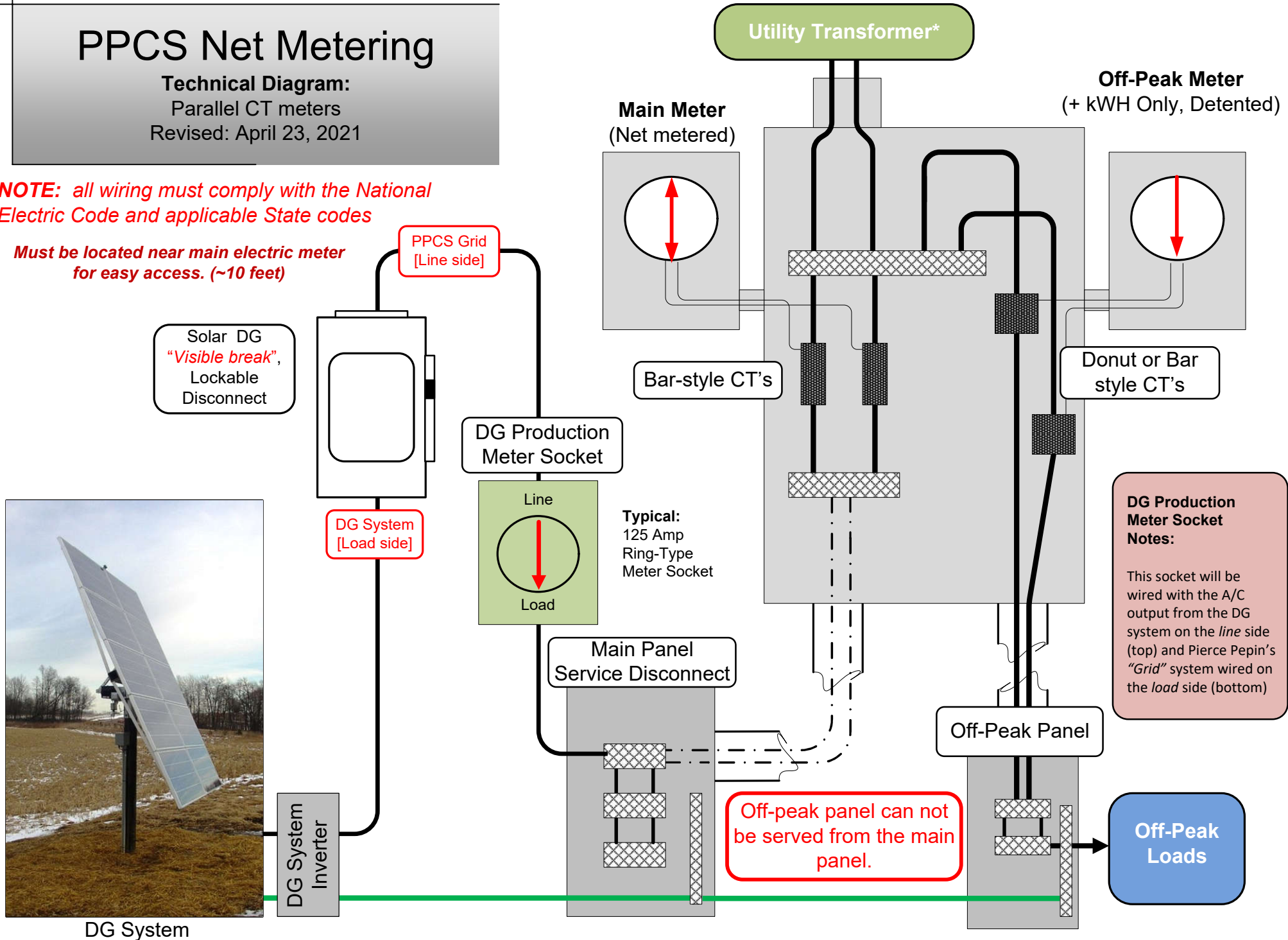
* Both underground and overhead service options are available.

PPCS Net Metering

Technical Diagram:
Parallel CT meters
Revised: April 23, 2021

NOTE: all wiring must comply with the National Electric Code and applicable State codes

Must be located near main electric meter for easy access. (~10 feet)



DG Production Meter Socket Notes:
This socket will be wired with the A/C output from the DG system on the *line* side (top) and Pierce Pepin's "Grid" system wired on the *load* side (bottom)

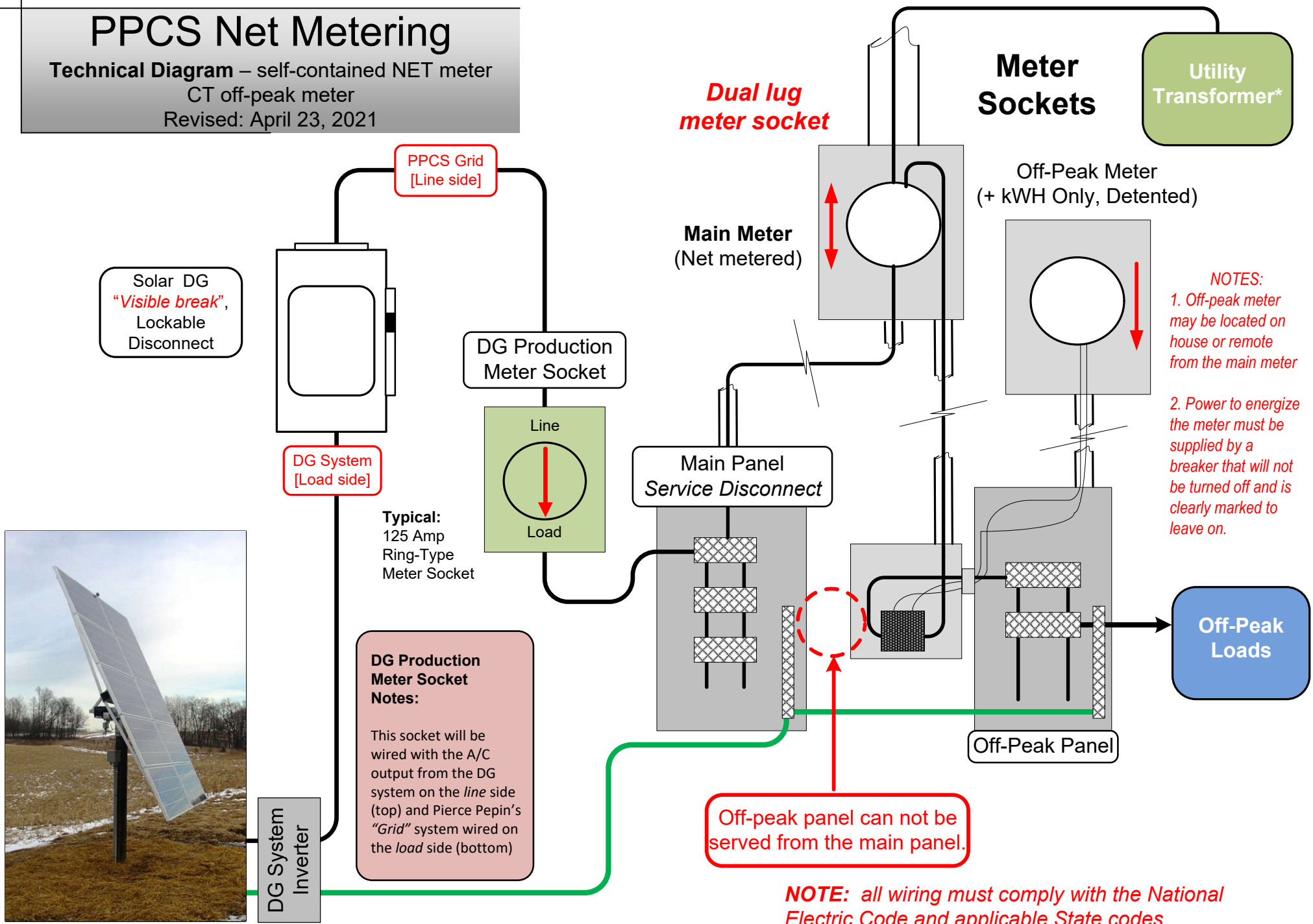
Off-peak panel can not be served from the main panel.

DG System

* Both underground and overhead service options are available.

PPCS Net Metering

Technical Diagram – self-contained NET meter
 CT off-peak meter
 Revised: April 23, 2021



DG System

*NOTE: Both underground and overhead service options are available.